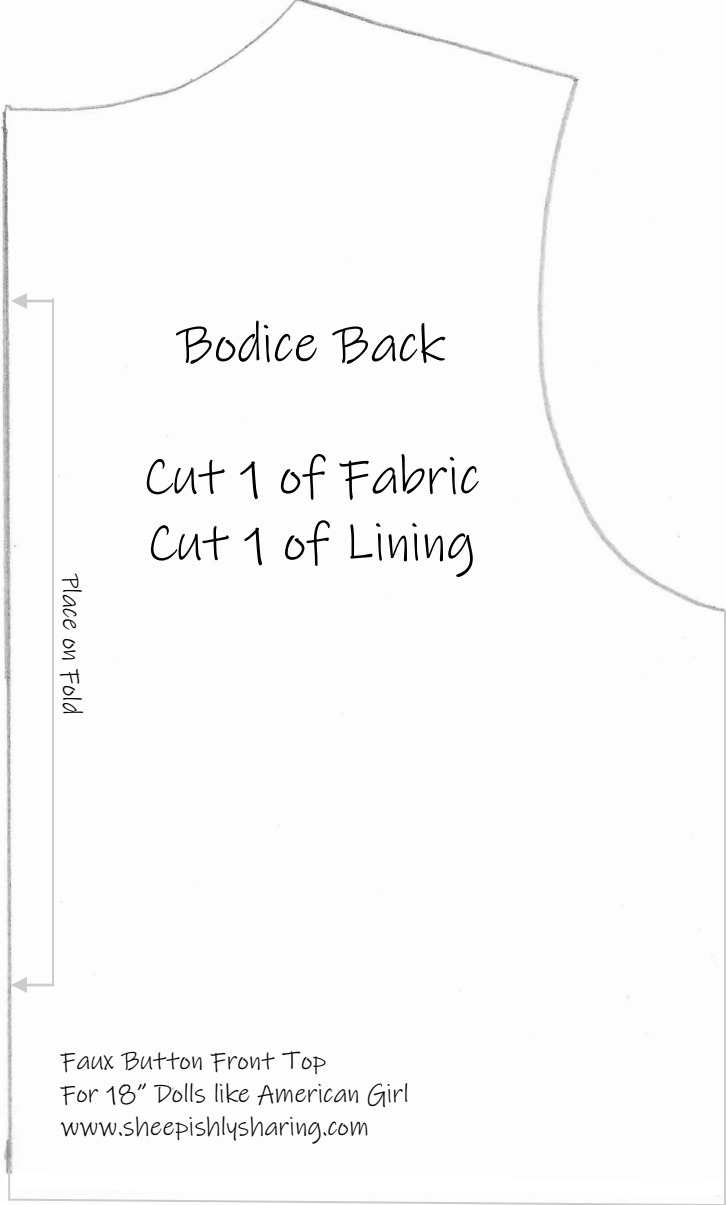
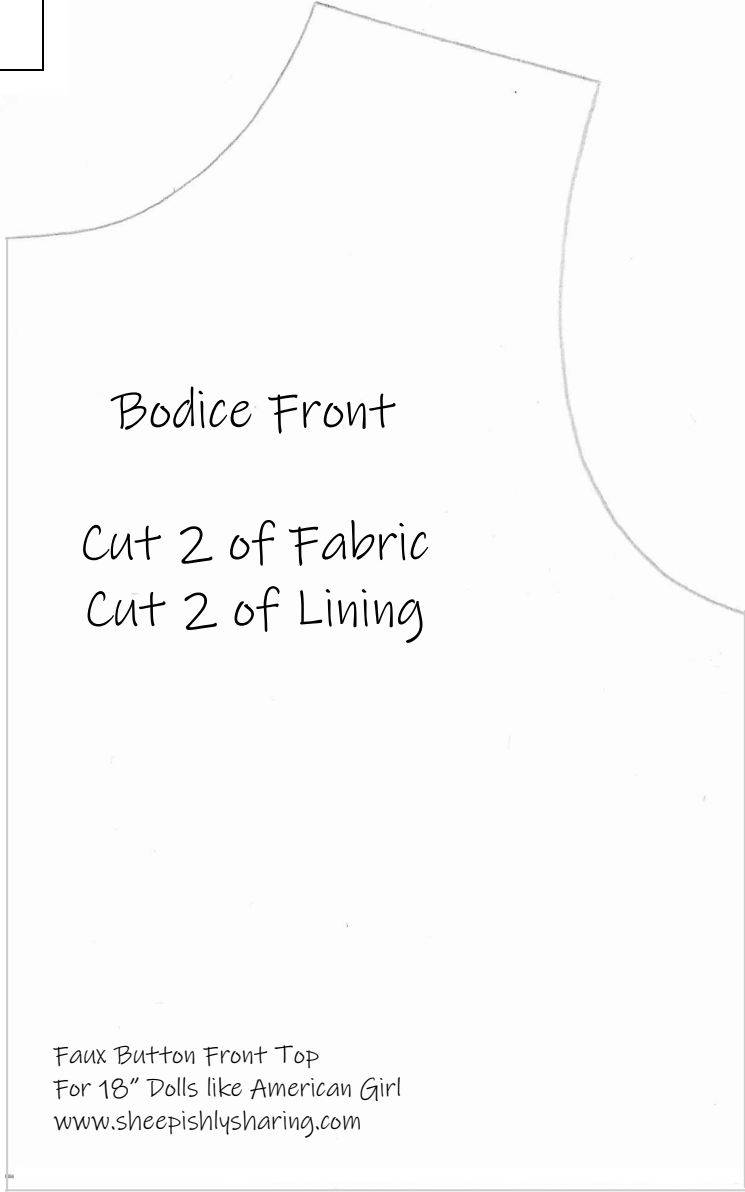


1 inch
test
square

*For Ruffle, cut out a strip of fashion fabric that measures 3" x 24"



Sewing Instructions for Faux Button Front Top - page 1



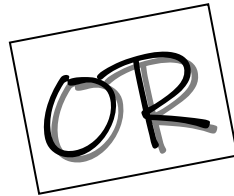
Faux Button Front Top
For 18" Dolls like American Girl
www.sheepishlysharing.com

1. Cut out 2 Bodice Fronts of fabric.
2. Cut out 2 Bodice Fronts of lining.
3. Cut out Bodice Backs on fold (1 of fabric; 1 of lining)
4. Ruffle: Cut out a strip of fashion fabric that measures 3" x 24"
5. With right sides together, sew Fronts and Back together at shoulders. Repeat with Lining pieces. Press all seam allowances open.
6. Place Front on Front Lining right sides together matching seams at shoulders. Starting at one lower edge of Front, stitch along one center front edge, around neckline and down the other center front edge with a 1/4" seam. Then stitch around each armhole using 1/4" seam.
7. Clip curves on neckline and armholes and trim all corners. (Remember that side seams and lower edges are still unsewn.)
8. Turn right side out. Use a point tool to push out corners. Press all seams flat.
9. Open the side seams and pin Fronts to Back at side seams. (Fabric-to-fabric and lining-to-lining.) Stitch side seams from lower edge of fabric to lower edge of lining on each side. Press seam allowances open. Turn to right side and press.

Sewing Instructions for Faux Button Front Top - page 2

Ruffle - Method 1 - No Serger

1. Press under 1/4" of Lining side only. (This will cover ruffle later.)
2. Ruffle: Fold in half long ways right sides together and sew each short end closed. Trim corners and turn right sides out; press. Run gathering stitches a bit less than 1/4" from the edge. Pull up gathers and distribute evenly to match measurement of bottom of shirt. Pin right sides together (matching raw edges) onto the Fabric side of shirt. Sew 1/4" seam.
3. Flip ruffle down and press keeping raw edges between fabric and lining.
4. Hand stitch lining to ruffle to encase the raw edges. (Or apply fusible web, fabric glue or even hot glue works well)



Ruffle - Method 2 - with Serger

1. Fold in half long ways right sides together and sew each short end closed. Trim corners and turn right sides out; press. Run gathering stitches a bit less than 1/4" from the edge. Pull up gathers and distribute evenly to match measurement of bottom of shirt. Pin right sides together (matching raw edges) onto the Fabric side of shirt. Sew 1/4" seam through all 3 layers (ruffle, fabric and lining).
2. Serge all 3 layers together. Flip ruffle down and press.



Closure

1. Place 3 buttons spaced evenly and sew on top of the wearer's right side.
2. Apply 1/2" Velcro to each side of opening. (I usually put soft side on topside of doll's left and rough side inside the doll's right.)